



EGYPT FARMER GUIDE

YOUR GUIDE TO
UNDERSTANDING WHERE YOUR
FOOD COMES FROM





In the expansive agricultural landscapes of Egypt, a notable transformation is underway. Small-scale farmers, stewards of the fertile Nile Delta and surrounding areas, are reshaping the narrative of food production. As Egypt grapples with the complexities of establishing regulations and laws related to terms like "organic," "natural," and "clean," a dedicated group of farmers, collaborating with partners such as the Egyptian Biodynamic Association (EBDA) and the Economy of Love (EoL), has initiated locally relevant quantitative alternatives to global certifications.

In a pragmatic understanding of food as more than mere sustenance but a journey from soil to plate, our guide aims to present some small-scale farming in Egypt in a holistic way. Acknowledging the dynamic regulatory landscape and the absence of a standardized framework for terms like "organic," we strive to offer consumers a nuanced perspective on the origins of their food.





3 Dimensions of this Guide



1. Beyond Labels: The Complexity of Food Production:
In a reality where labels such as "organic" often oversimplify the intricate web of agricultural practices, our guide intends to unravel the complexities. Food production unfolds as a story of dedication, innovation, and the symbiotic relationship between farmers and their land. We delve into the diverse practices employed by small-scale farmers, emphasizing sustainable methods that contribute to both environmental health and community well-being.

2. The Human Face of Farming:
Every piece of produce narrates a story, and behind each brand stands an individual with a passion for sustainable agriculture. Our guide will give more context to products on store shelves, introducing consumers to the individuals shaping these brands, fostering a connection between consumers and the real people responsible for bringing food to their tables.

3. A Holistic Approach with EBDA and EoL:
Collaboration lies at the core of our initiative. Partnering with the Egyptian Biodynamic Association (EBDA) and the Economy of Love (EoL), we present a holistic profile of producers and their farms. EBDA, committed to biodynamic farming practices, and EoL, advocating for an economy rooted in love and sustainability, add layers of depth to our guide. Together, we want to give more depth to products, supporting a more transparent and ethical food system.





Collaborating with Economy of Love (EoL) proves to be a transformative partnership for small-scale farmers in Egypt. EoL goes beyond the traditional scope of connecting farmers with consumers; instead, it actively engages in on-the-ground initiatives that contribute to the ecological sustainability and economic empowerment of farmers.

EoL's efforts extend to fostering regenerative farming practices, and two key initiatives stand out. Firstly, by assisting farmers in producing compost, EoL not only enhances soil fertility but also encourages a circular and sustainable agricultural system. Composting serves as a natural fertilizer, promoting healthy crop growth while minimizing reliance on external inputs. Secondly, EoL's commitment to planting trees aligns with a broader environmental agenda. Trees play a crucial role in sequestering carbon dioxide, contributing to the mitigation of climate change. By incorporating tree-planting into their initiatives,





EoL not only aids in environmental conservation but also supports farmers in adopting agroforestry practices, diversifying their income streams. The innovative aspect lies in how these initiatives are translated into tangible benefits for farmers – in the form of carbon credits. EoL transforms the environmental impact of compost production and tree planting into a quantifiable metric, generating carbon credits. These credits, in turn, become a valuable asset that generates additional income for smallholder farmers practicing regenerative farming.

The EoL is also leveraging on EBDA's 29 years of experience in the field of organic and biodynamic agriculture in Egypt. In essence, collaborating with EoL and EBDA on this farmer guide, provides the opportunity to not only connect with conscious consumers but also to actively engage in sustainable and regenerative practices. The translation of these practices into carbon credits introduces an innovative economic dimension, providing small-scale farmers in Egypt with a meaningful and diversified source of income, contributing to the resilience and continuation of agroecological farmers in the region.



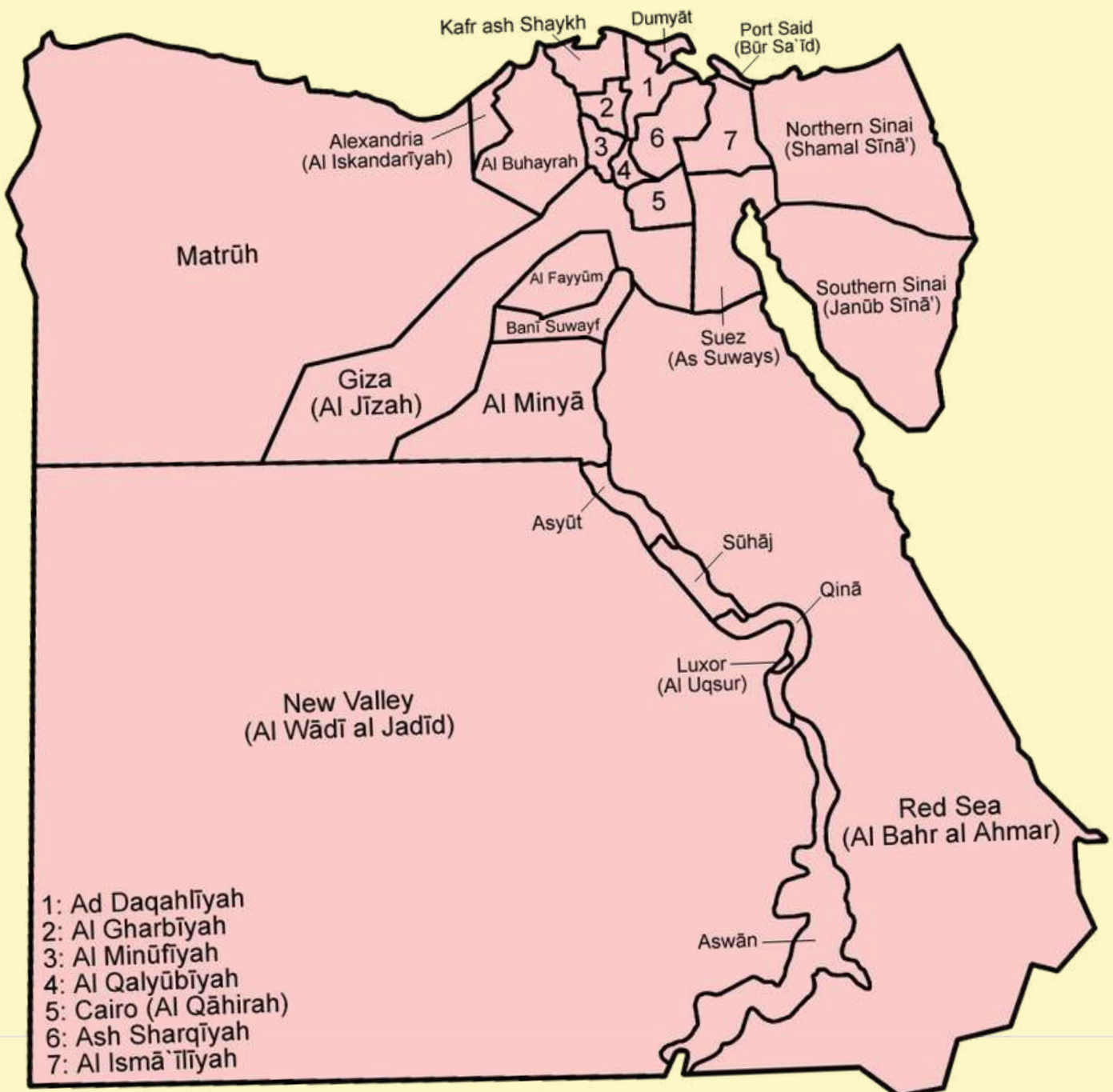


The Farms in a nutshell



Our first guide presents farms from three governorates:

1. Sharqia
2. Fayoum
3. Beheira





#	Farm Name	Governorate	Latitude	Longitude	Area Fd	# Farmer
1	El-Hassan	Sharqia	30.472421	31.67617	10	1
2	Taha	Sharqia	30.473233	31.689231	7	1
3	Mahmoud	Sharqia	30.473371	31.690173	7	1
4	El-Aasar	Sharqia	30.4235746	31.6175704	8	3
5	Reda Mohamed	Sharqia	30.44399	31.605558	5	2
6	Mosalam	Sharqia	30.433525	31.608986	10	1
7	El-Neis	Sharqia	30.425685	31.617435	4	4
8	Hemdan	Faiyum	29.306921	30.727656	6	2
9	Mubark	Faiyum	29.302437	30.568051	16	8
10	Hamzawy	Faiyum	29.349031	30.501278	15	5
11	Jaber El Maghazi	Al Behiera	31.0106452	30.0217969	10	1
12	Yasser Salah	Al Behiera	30.9622655	30.0557818	8	1
13	Taher Shawky	Al Behiera	31.0174421	30.0949062	10	1
14	Ahmed Ramdan	Al Behiera	31.0490319	30.0126904	10	1
15	Abd El Azim Ramdan	Al Behiera	31.0202223	30.1629464	10	2
16	Khamees Abd El Azim	Al Behiera	31.0196218	30.1632727	5	1
17	Attia Badr	Al Behiera	31.250987	30.4102458	5	1
18	Orabi	Al Behiera	31.027055	30.101139	10	1
19	Al Bokly	Al Behiera	31.0274124	30.1015882	10	1
20	Hussein Abu Saada	Al Behiera	31.026729	30.050572	15	1
21	Samy El Maghazi	Al Behiera	31.013081	30.000445	15	1
22	Sabry Kamal	Al Behiera	30.988234	30.003608	15	1
23	Kamal Hamed	Al Behiera	31.0093963	30.0260187	15	1
24	Reda Mohamed	Al Behiera	30.0240985	31.0147592	10	4
25	Yasser Salah	Al Behiera	30.9622655	30.0557818	8	1
26	Hamed El Maghazi	Al Behiera	31.0166255	30.0722878	15	1
27	Saad Abd El Aziz	Al Behiera	30.8471529	30.0301985	15	1
28	Ahmed Ramdan	Al Behiera	31.0490319	30.0126904	10	1
29	Youssuf Badr	Al Behiera	31.2530816	30.4094743	15	5
30	Ghazal	Al Behiera	31.0542923	30.0463951	15	1



Sharqia Governorate, located in the Nile Delta, is known for its fertile soil and significant agricultural activity. The region benefits from the water resources of the Nile River, making it conducive to various agricultural practices. The agricultural landscape in Sharqia encompasses a diverse range of crops, including cereals, fruits, and vegetables. Common crops include wheat, rice, sugarcane, citrus fruits, and vegetables such as tomatoes and onions. Agricultural practices in Sharqia heavily rely on irrigation, primarily from the Nile River. Traditional methods and modern irrigation systems are employed to ensure optimal water usage. The Nile Delta's intricate network of canals facilitates the distribution of water for agricultural purposes.

Despite its agricultural richness, Sharqia faces challenges such as water scarcity and land degradation. As local farmers are exploring solutions to these challenges, EBDA provides almost 30 years of experience in Egypt, with solutions incorporating sustainable and organic farming practices to enhance soil health and reduce environmental impacts.





Al Fayoum Governorate, situated southwest of Cairo, is recognized for its fertile agricultural land and Lake Qarun. The region's agricultural practices are shaped by its geographic features, with the fertile soil of the Fayoum Basin supporting a variety of crops. The main crops are wheat, rice, vegetables, fruits, and cotton. Irrigation is crucial for Al Fayoum's agriculture. Farmers use water from Lake Qarun and the Nile River, employing both traditional and modern irrigation methods to ensure efficient water distribution. Similar to other agricultural regions, Al Fayoum faces challenges such as water management and land degradation.

As local farmers are exploring solutions to these challenges, EBDA and EoL provide solutions incorporating sustainable and organic farming practices to enhance soil health and reduce environmental impacts.





El Beheira Governorate, situated in the northern part of Egypt, is characterized by its diverse agricultural landscape. The region benefits from the fertile soils of the Nile Delta, making it suitable for various types of crop cultivation. Common crops include wheat, rice, cotton, sugarcane, fruits, and vegetables. The choice of crops is influenced by factors such as soil quality, water availability, and market demands. Similar to other Nile Delta regions, agriculture in El Beheira relies on effective irrigation systems, utilizing the waters of the Nile River. Traditional and modern irrigation techniques are employed to ensure efficient water distribution, supporting the diverse agricultural activities in the governorate. El Beheira, like other agricultural regions, faces challenges such as water scarcity, land degradation, and the need for sustainable farming practices. As local farmers are exploring solutions to these challenges, EBDA and EoL provide solutions incorporating sustainable and organic farming practices to enhance soil health and reduce environmental impacts.

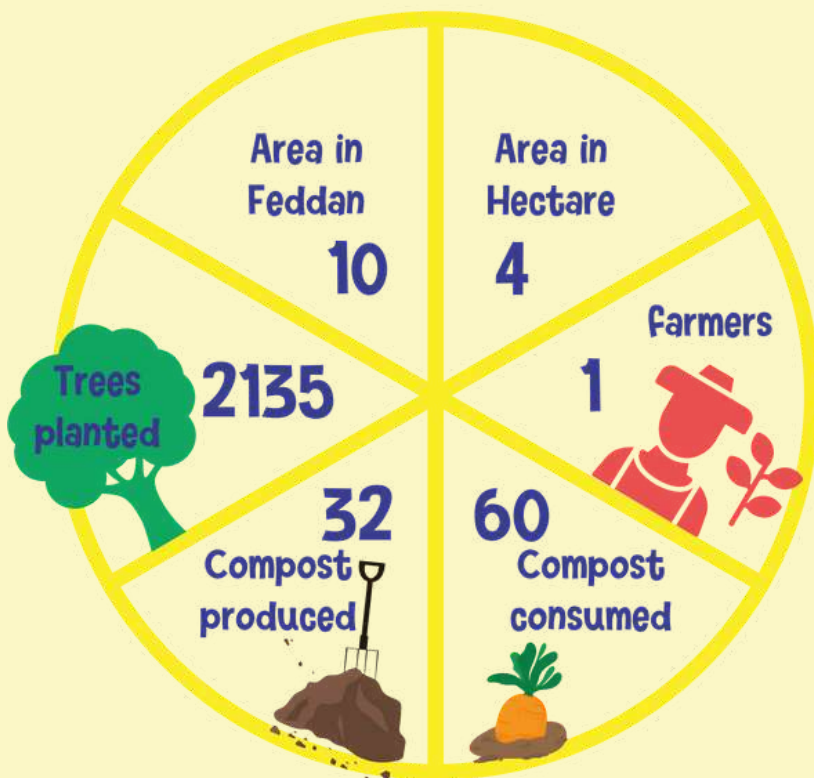




1. El-Hassan Farm



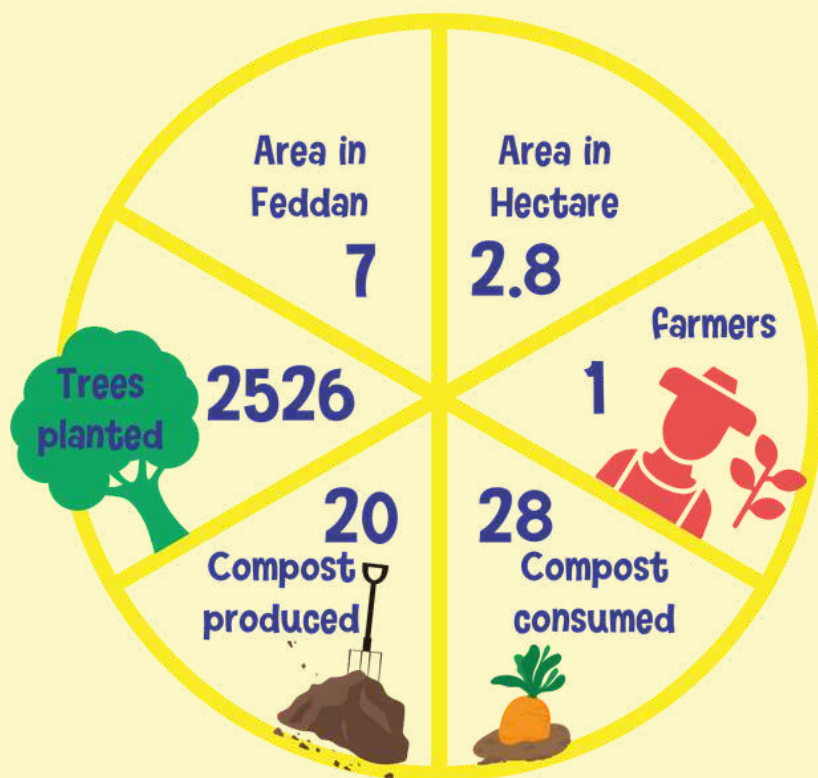
The El-Hassan Farm is Located in the Sharqia Governorate, in the eastern part of the Nile Delta, which is an important agricultural region of Egypt. The area is renowned for its fertile soil and favorable climate, making it an ideal place for farming. The locals cultivate a variety of crops, including wheat, rice, cotton, and vegetables. With a growing number of farms pioneering in biodynamic agriculture, Sharqia is contributing to climate change mitigation efforts through initiatives like those of El-Hassan Farm which is growing 2135 trees and produces around 32 tons of compost.



2. Taha Farm



Taha Farm is Located in the Sharqia Governorate, in the eastern part of the Nile Delta, which is an important agricultural region of Egypt. The area is renowned for its fertile soil and favorable climate, making it an ideal place for farming. The locals cultivate a variety of crops, including wheat, rice, cotton, and vegetables. With a growing number of farms pioneering in biodynamic agriculture, Sharqia is contributing to climate change mitigation efforts through initiatives like those of Taha Farm which is growing 2526 trees and produces around 20 tons of compost.

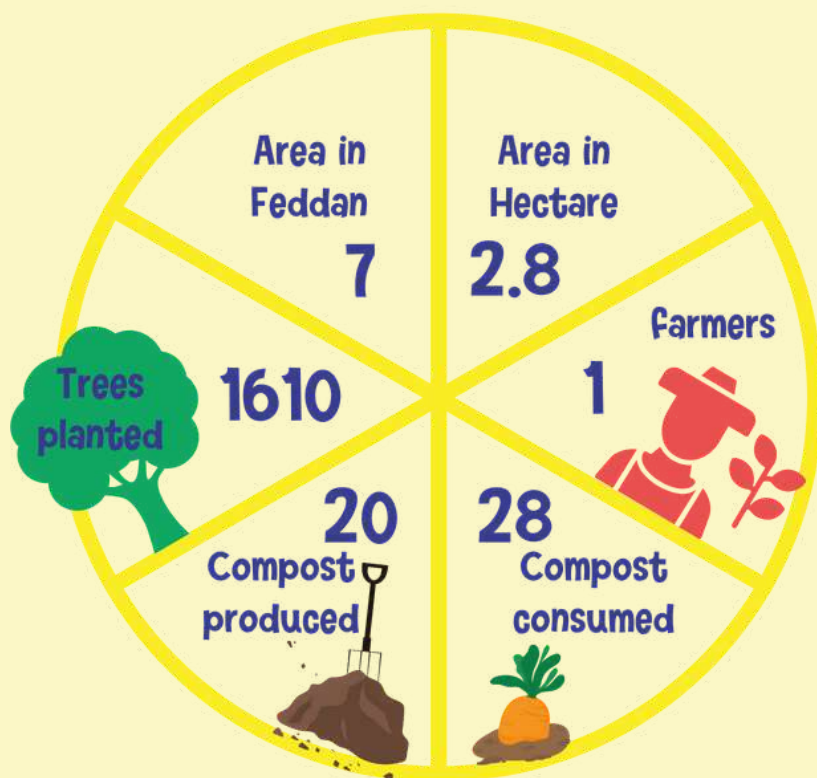




3. Mahmoud Farm



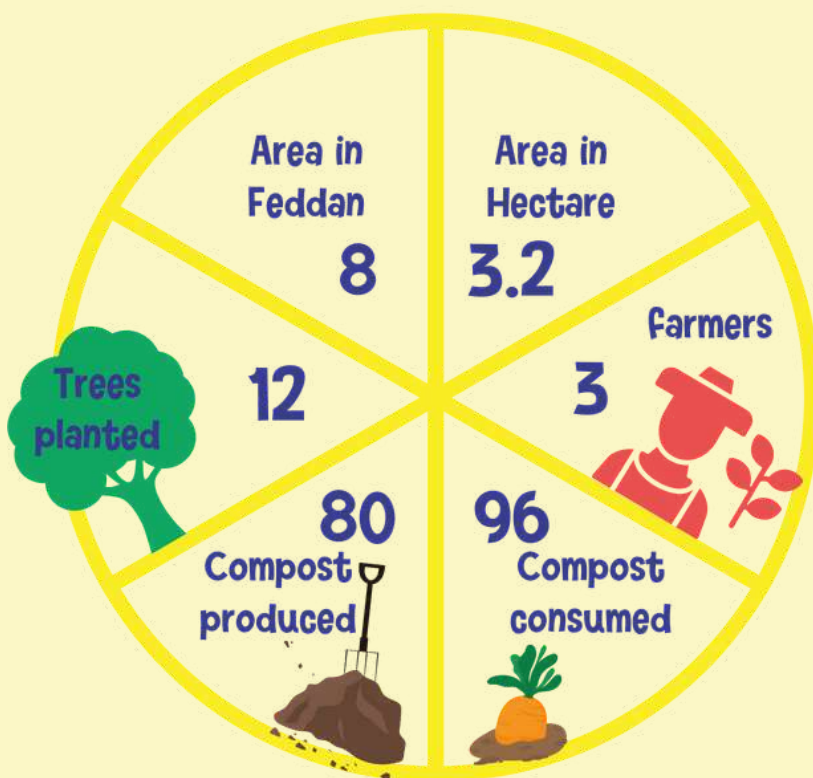
Mahmoud Farm is Located in the Sharqia Governorate, in the eastern part of the Nile Delta, which is an important agricultural region of Egypt. The area is renowned for its fertile soil and favourable climate, making it an ideal place for farming. The locals cultivate a variety of crops, including wheat, rice, cotton, and vegetables. With a growing number of farms pioneering in biodynamic agriculture, Sharqia is contributing to climate change mitigation efforts through initiatives like those of Mahmoud Farm which is growing 1610 trees and produces around 20 tons of compost.



4. El-Asar Farm



El-Asar Farm is Located in the Sharqia Governorate, in the eastern part of the Nile Delta, which is an important agricultural region of Egypt. The area is renowned for its fertile soil and favourable climate, making it an ideal place for farming. The locals cultivate a variety of crops, including wheat, rice, cotton, and vegetables. With a growing number of farms pioneering in biodynamic agriculture, Sharqia is contributing to climate change mitigation efforts through initiatives like those of El-Asar Farm which is growing 12 trees and produces around 80 tons of compost.

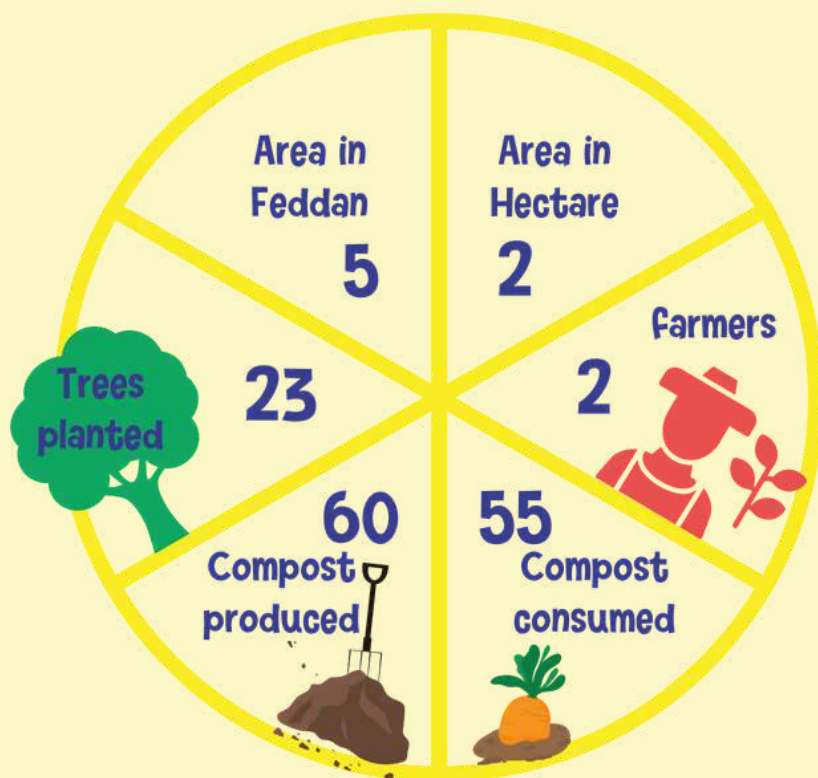




5. Reda Mohamed Farm



Reda Mohamed Farm is Located in the Sharqia Governorate, in the eastern part of the Nile Delta, which is an important agricultural region of Egypt. The area is renowned for its fertile soil and favourable climate, making it an ideal place for farming. The locals cultivate a variety of crops, including wheat, rice, cotton, and vegetables. With a growing number of farms pioneering in biodynamic agriculture, Sharqia is contributing to climate change mitigation efforts through initiatives like those of Reda Mohamed Farm which is growing 23 trees and produces around 60 tons of compost.

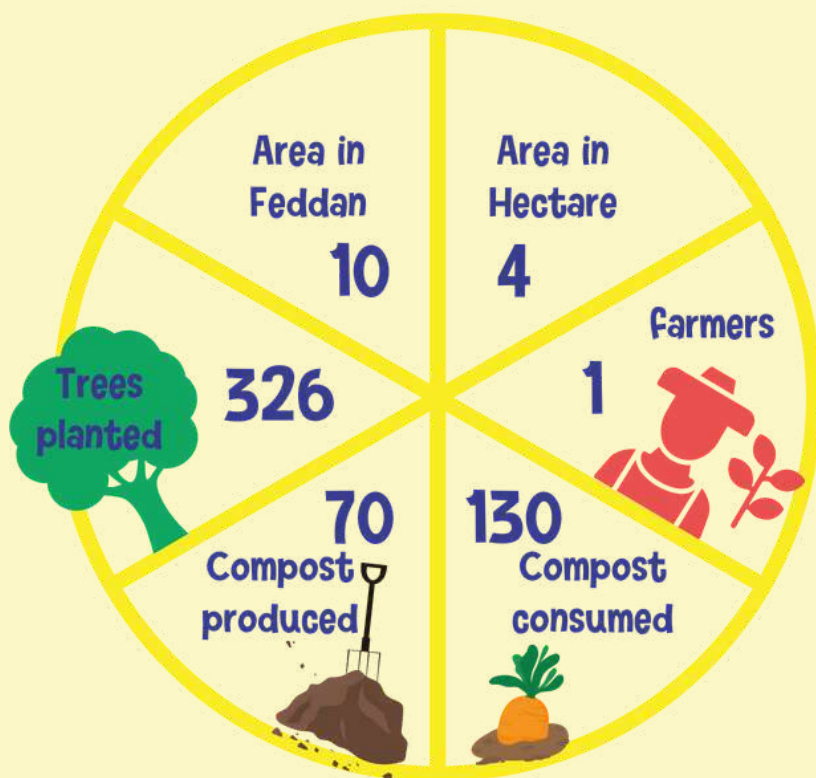




6. Mosalam Farm



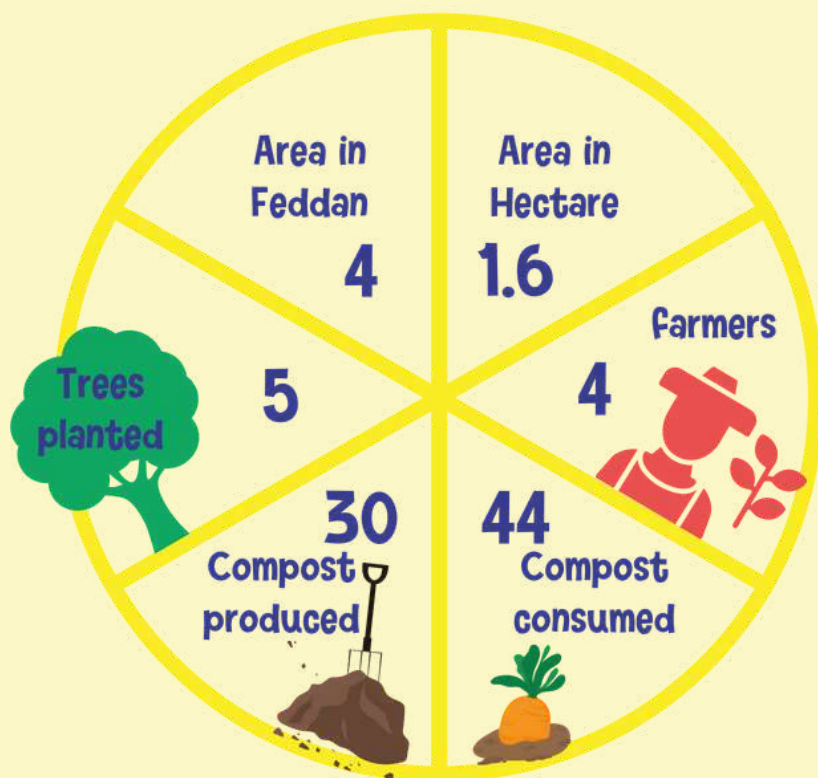
The Mosalam Farm is Located in the Sharqia Governorate, in the eastern part of the Nile Delta, which is an important agricultural region of Egypt. The area is renowned for its fertile soil and favorable climate, making it an ideal place for farming. The locals cultivate a variety of crops, including wheat, rice, cotton, and vegetables. With a growing number of farms pioneering in biodynamic agriculture, Sharqia is contributing to climate change mitigation efforts through initiatives like those of Mosalam Farm which is growing 326 trees and produces around 70 tons of compost.



7. El-Neis Farm



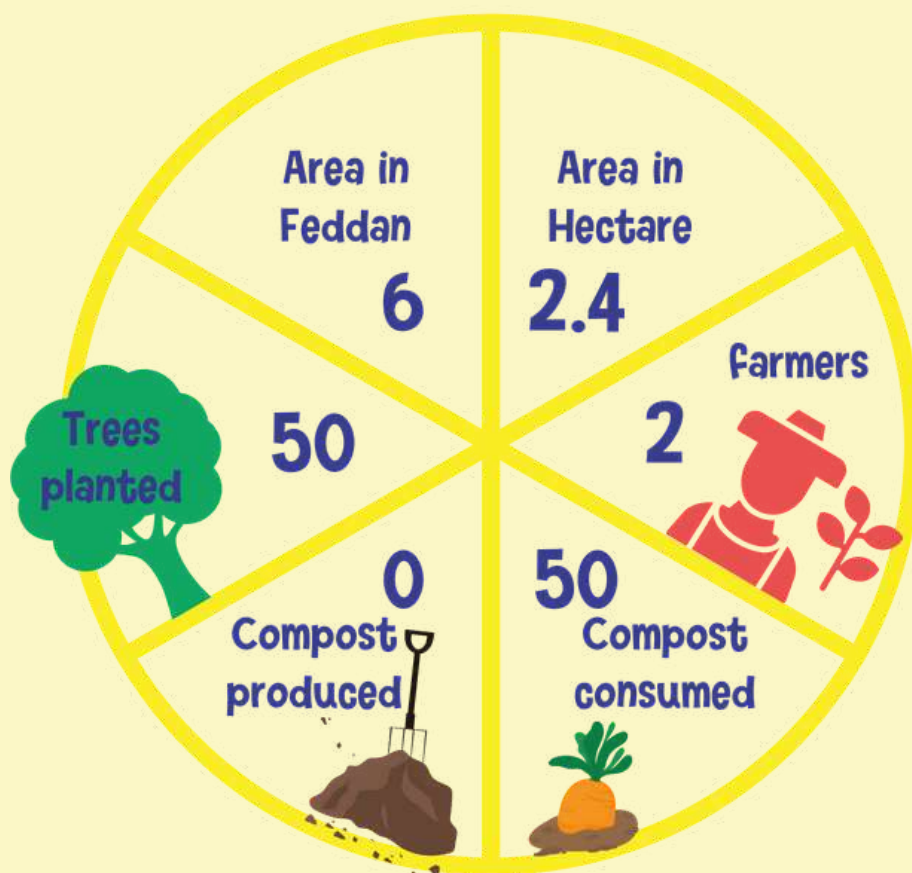
El-Neis Farm is Located in the Sharqia Governorate, in the eastern part of the Nile Delta, which is an important agricultural region of Egypt. The area is renowned for its fertile soil and favorable climate, making it an ideal place for farming. The locals cultivate a variety of crops, including wheat, rice, cotton, and vegetables. With a growing number of farms pioneering in biodynamic agriculture, Sharqia is contributing to climate change mitigation efforts through initiatives like those of El-Neis Farm which is growing 5 trees and produces around 30 tons of compost.



8. Hemdan Farm



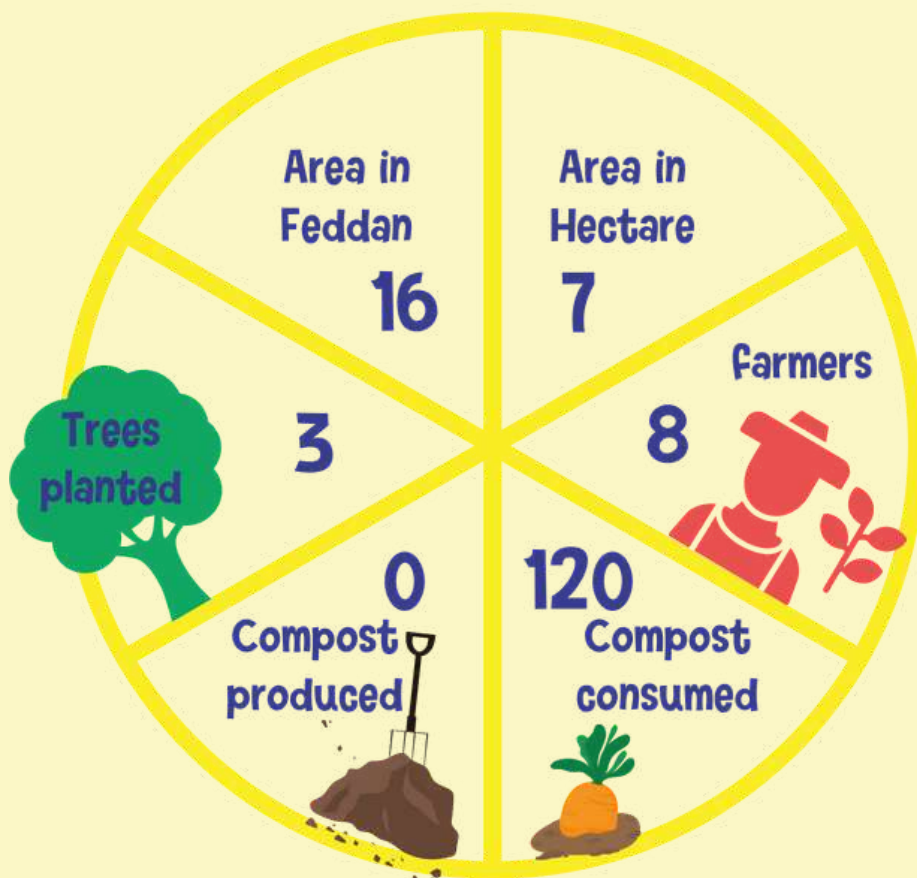
Hemdan Farm is located in the Fayoum Governorate which lies west of the Nile River. Fayoum is known for its expansive lakes, fertile lands, and lush palm groves. The locals of Fayoum have a long tradition of farming, and the region produces a wide variety of crops, including olives, dates, and vegetables. The area is also famous for its ancient landmarks, including the Pyramid of Hawara and the Valley of the Whales, which offer a glimpse into the rich history of the region. Additionally, Hemdan Farm is growing 50 trees.



9. Mubark Farm



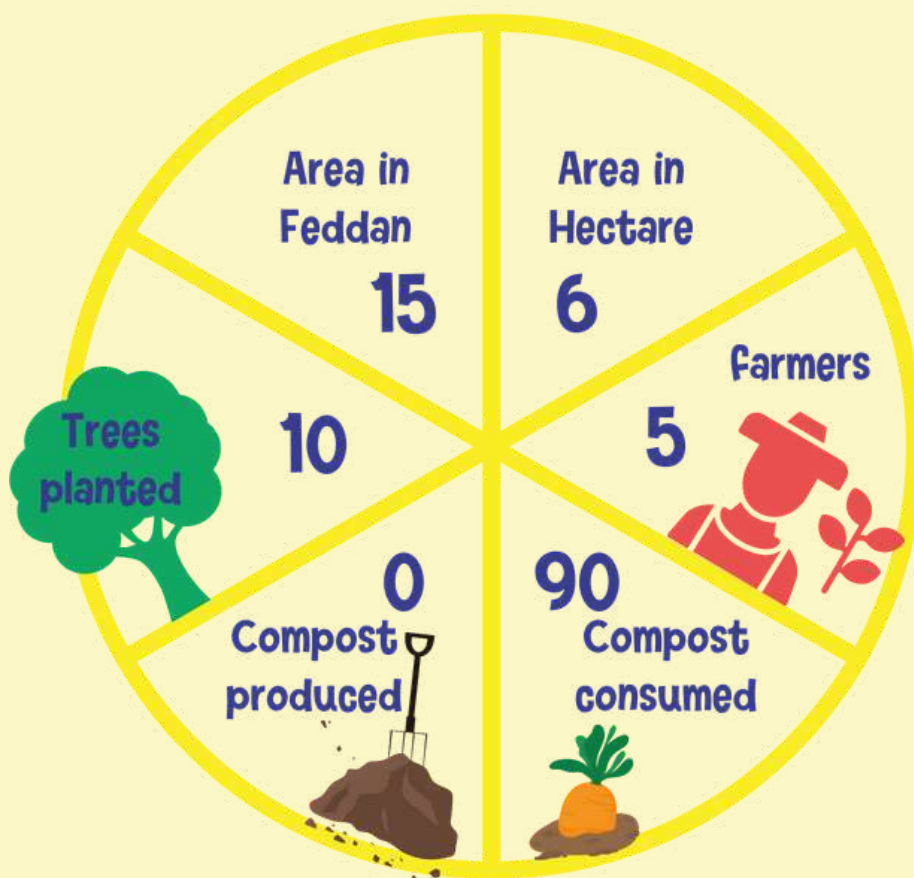
Mubark Farm is located in the Fayoum Governorate which lies west of the Nile River. Fayoum is known for its expansive lakes, fertile lands, and lush palm groves. The locals of Fayoum have a long tradition of farming, and the region produces a wide variety of crops, including olives, dates, and vegetables. The area is also famous for its ancient landmarks, including the Pyramid of Hawara and the Valley of the Whales, which offer a glimpse into the rich history of the region. Moreover, Mubark Farm is growing 3 trees.



10. Hamzawy Farm



Hamzawy Farm is located in the Fayoum Governorate which lies west of the Nile River. Fayoum is known for its expansive lakes, fertile lands, and lush palm groves. The locals of Fayoum have a long tradition of farming, and the region produces a wide variety of crops, including olives, dates, and vegetables. The area is also famous for its ancient landmarks, including the Pyramid of Hawara and the Valley of the Whales, which offer a glimpse into the rich history of the region. Additionally, Hamzawy Farm is growing 10 trees.

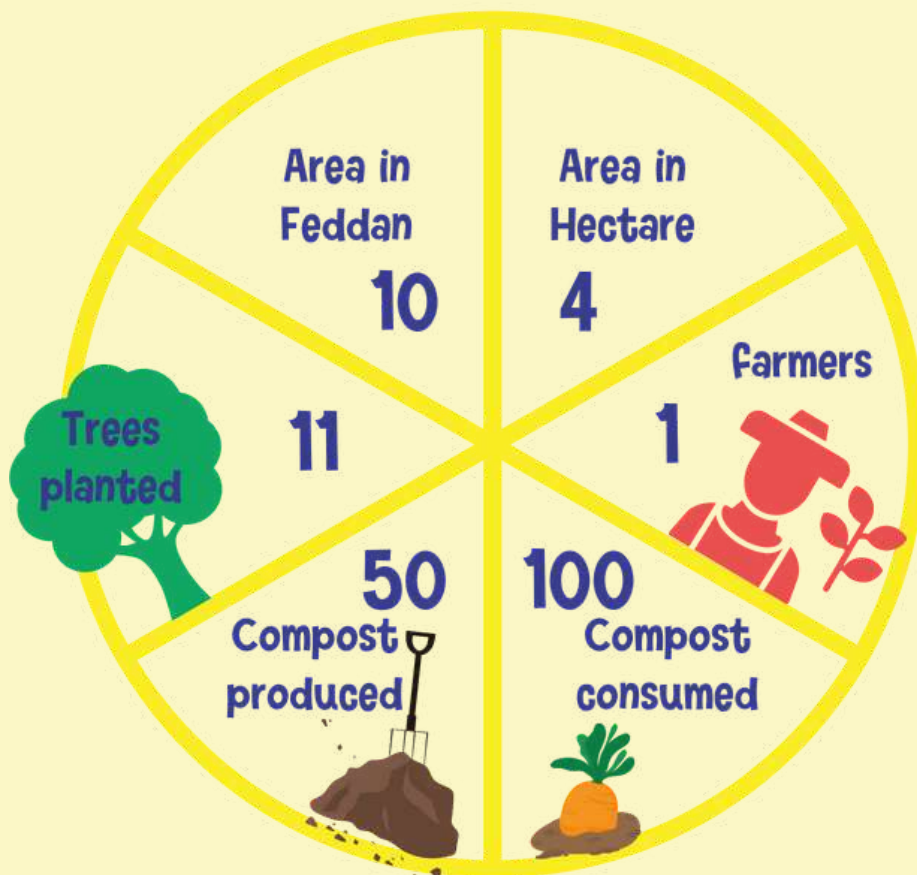




11. Jaber El Maghazi Farm



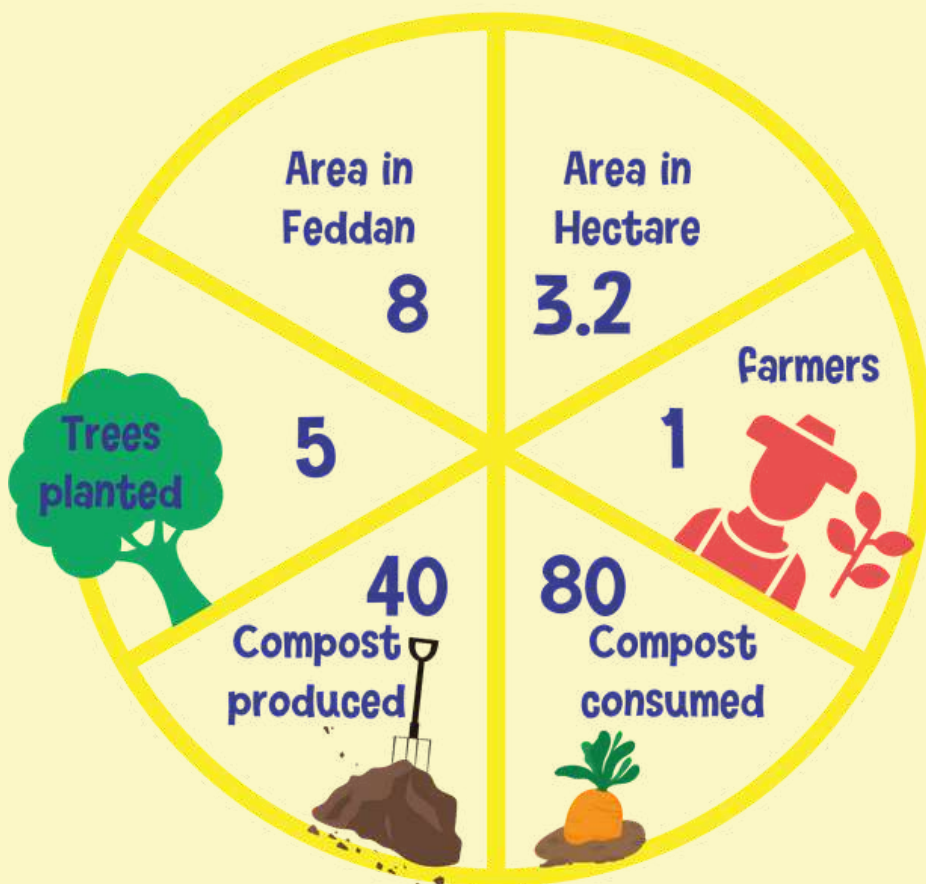
Jaber El Maghazi is located in El Behira governorate, a dazzling destination that captures the essence of Egypt's timeless charm. Its fertile land stretches from the Mediterranean Sea to the Nile Delta, providing a rich agricultural bounty that has sustained communities for centuries. Jaber El Maghazi Farm is nestled in the heart of the country's lush agricultural region and is located on the northern coast of Egypt. Jaber El Maghazi is growing 11 trees and produces around 50 tons of compost.



12. Yasser Salah Farm



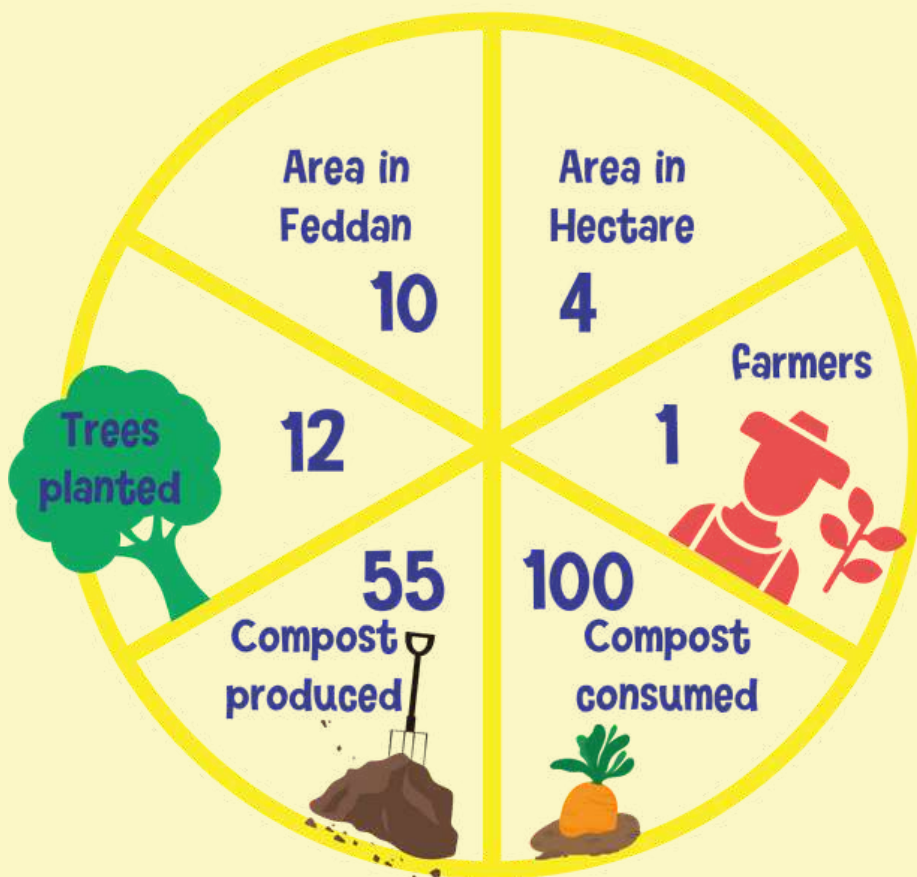
Yasser Salah is located in El Behira governorate, a dazzling destination that captures the essence of Egypt's timeless charm. Its fertile land stretches from the Mediterranean Sea to the Nile Delta, providing a rich agricultural bounty that has sustained communities for centuries. Yasser Salah Farm is nestled in the heart of the country's lush agricultural region and is located on the northern coast of Egypt. Yasser Salah is growing 5 trees and produces around 40 tons of compost.



13. Taher Shawky Farm



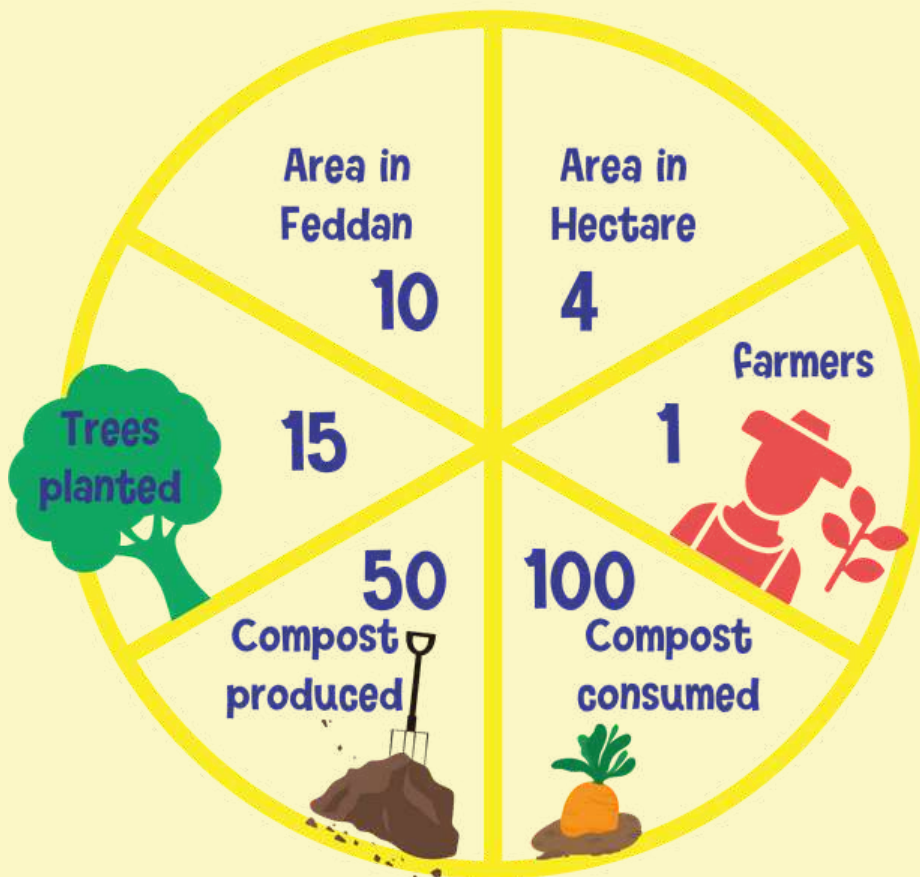
Taher Shawky is located in El Behira governorate, a dazzling destination that captures the essence of Egypt's timeless charm. Its fertile land stretches from the Mediterranean Sea to the Nile Delta, providing a rich agricultural bounty that has sustained communities for centuries. Taher Shawky Farm is nestled in the heart of the country's lush agricultural region and is located on the northern coast of Egypt. Taher Shawky is growing 12 trees and produces around 55 tons of compost.



14. Ahmed Ramadan Farm



Ahmed Ramadan is located in El Behira governorate, a dazzling destination that captures the essence of Egypt's timeless charm. Its fertile land stretches from the Mediterranean Sea to the Nile Delta, providing a rich agricultural bounty that has sustained communities for centuries. Ahmed Ramadan Farm is nestled in the heart of the country's lush agricultural region and is located on the northern coast of Egypt. Ahmed Ramadan is growing 15 trees and produces around 50 tons of compost.

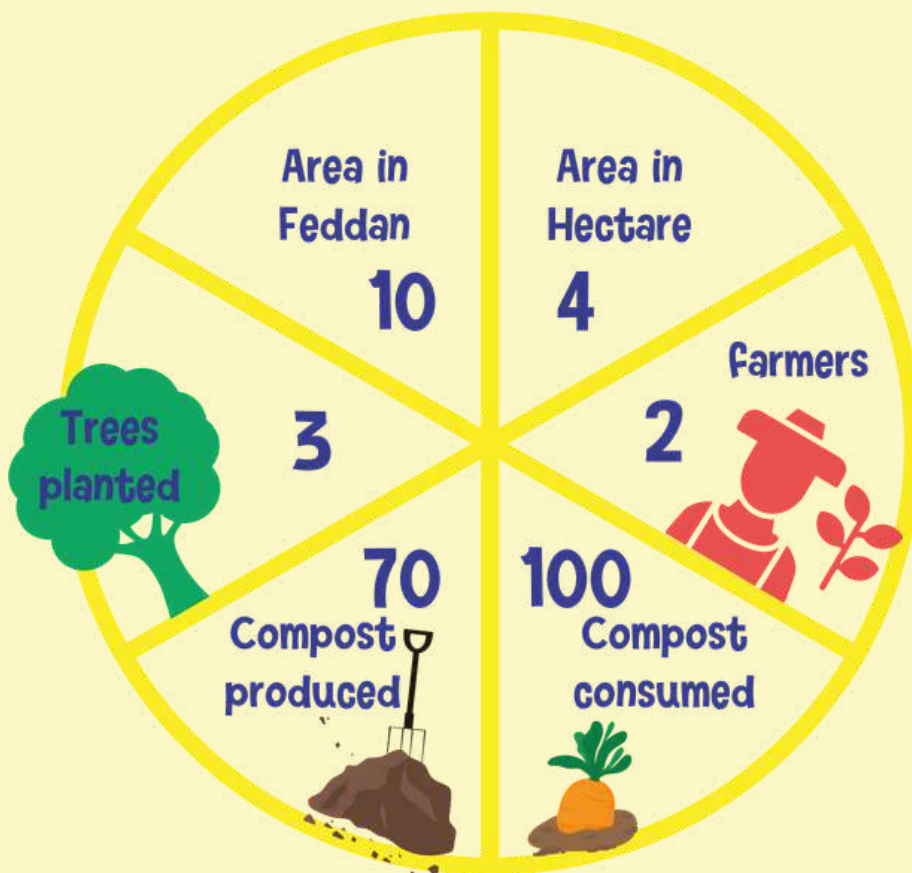




15. Abdel Azim Ramadan Farm



Abd El Azim Ramdan is located in El Behira governorate, a dazzling destination that captures the essence of Egypt's timeless charm. Its fertile land stretches from the Mediterranean Sea to the Nile Delta, providing a rich agricultural bounty that has sustained communities for centuries. Abd El Azim Ramdan Farm is nestled in the heart of the country's lush agricultural region and is located on the northern coast of Egypt. Abd El Azim Ramdan is growing 3 trees and produces around 70 tons of compost.

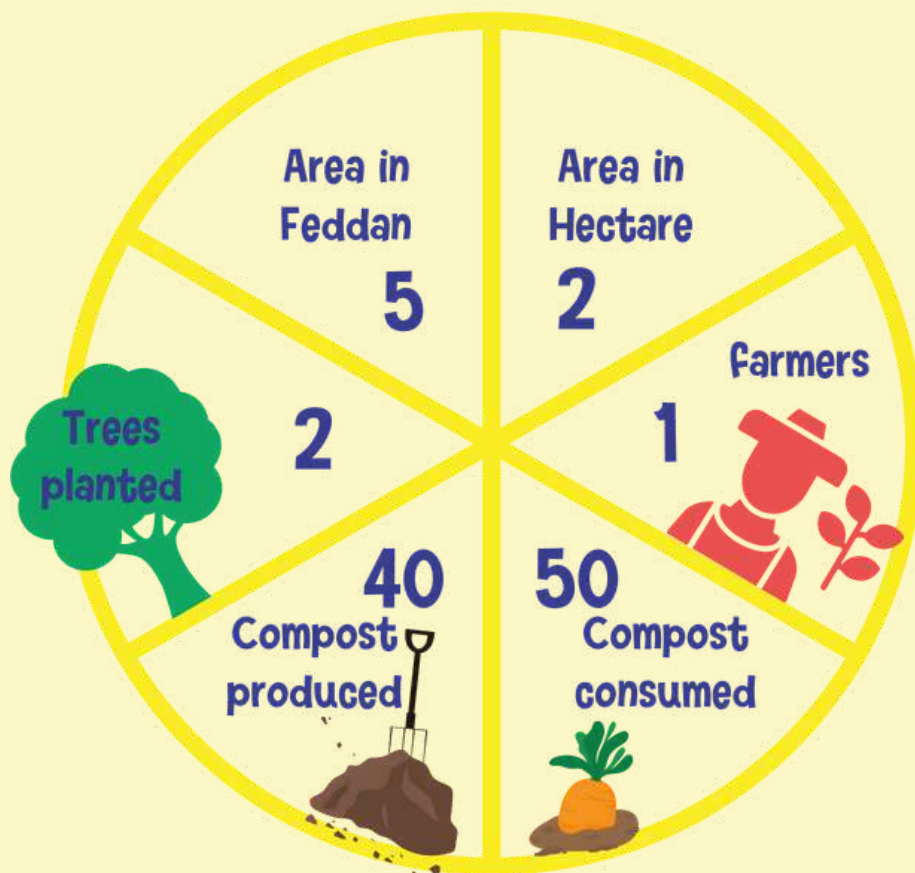




16. Khamees Abdelazim Farm



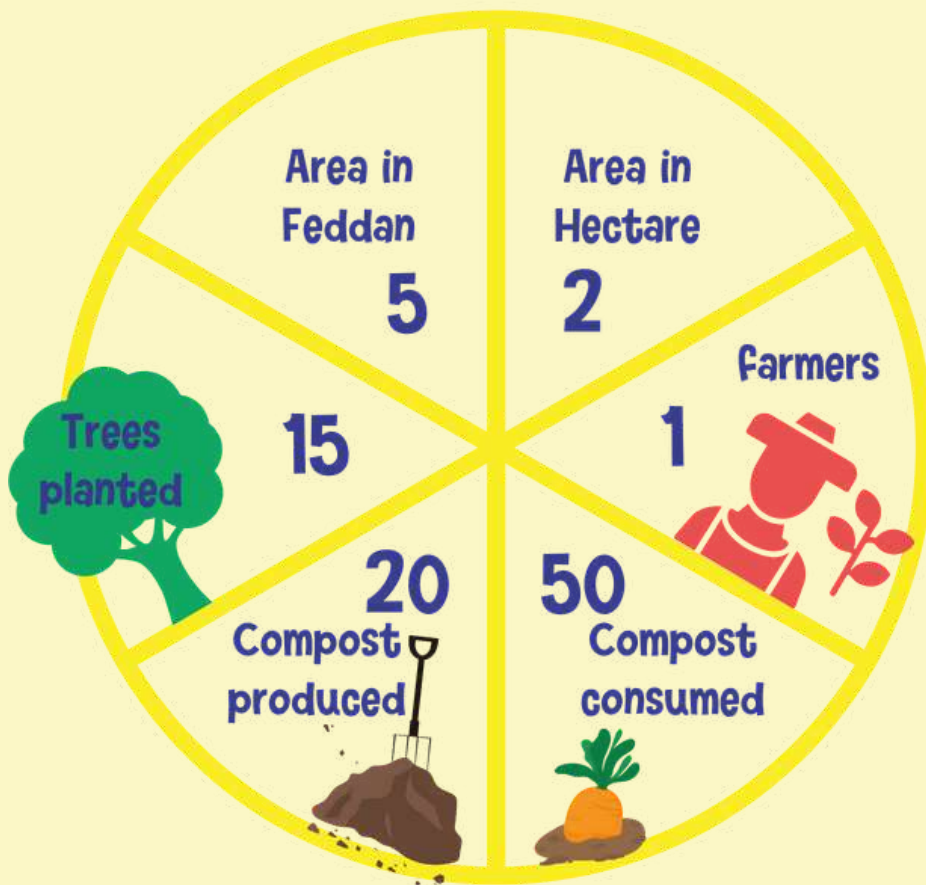
Khamees Abd El Azim is located in El Behira governorate, a dazzling destination that captures the essence of Egypt's timeless charm. Its fertile land stretches from the Mediterranean Sea to the Nile Delta, providing a rich agricultural bounty that has sustained communities for centuries. Khamees Abd El Azim Farm is nestled in the heart of the country's lush agricultural region and is located on the northern coast of Egypt. Khamees Abd El Azim is growing 2 trees and produces around 40 tons of compost.



17. Attia Badr Farm



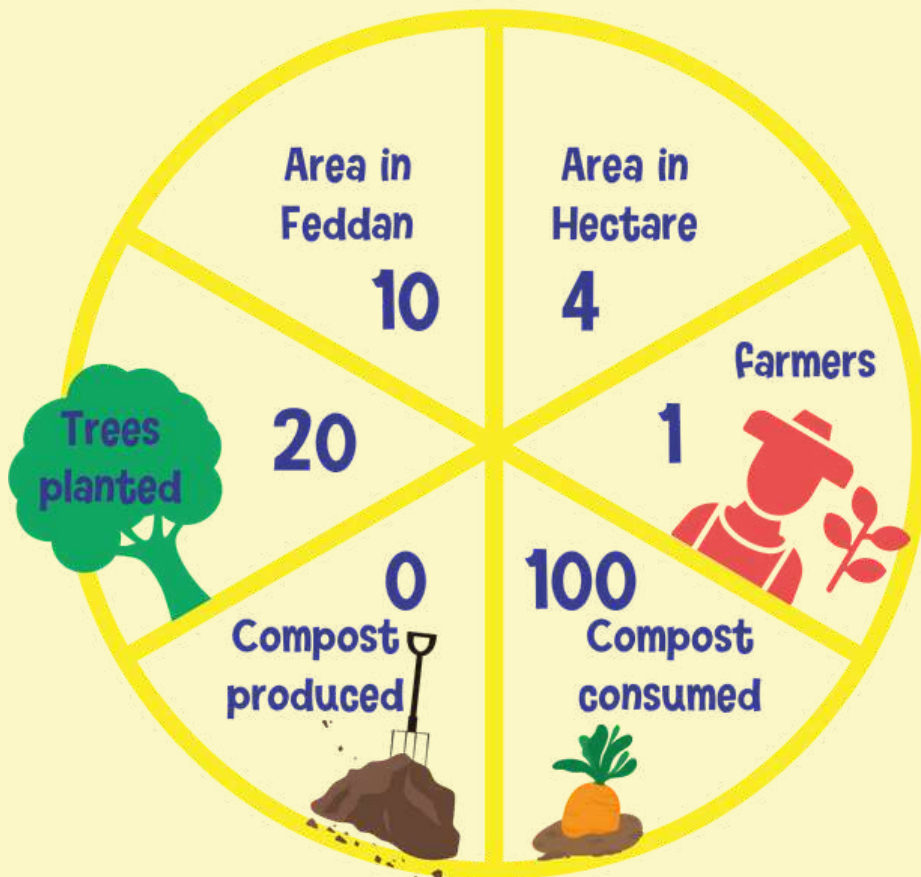
Attia Badr is located in El Behira governorate, a dazzling destination that captures the essence of Egypt's timeless charm. Its fertile land stretches from the Mediterranean Sea to the Nile Delta, providing a rich agricultural bounty that has sustained communities for centuries. Attia Badr Farm is nestled in the heart of the country's lush agricultural region and is located on the northern coast of Egypt. Attia Badr is growing 15 trees and produces around 20 tons of compost.



18. Orabi Farm



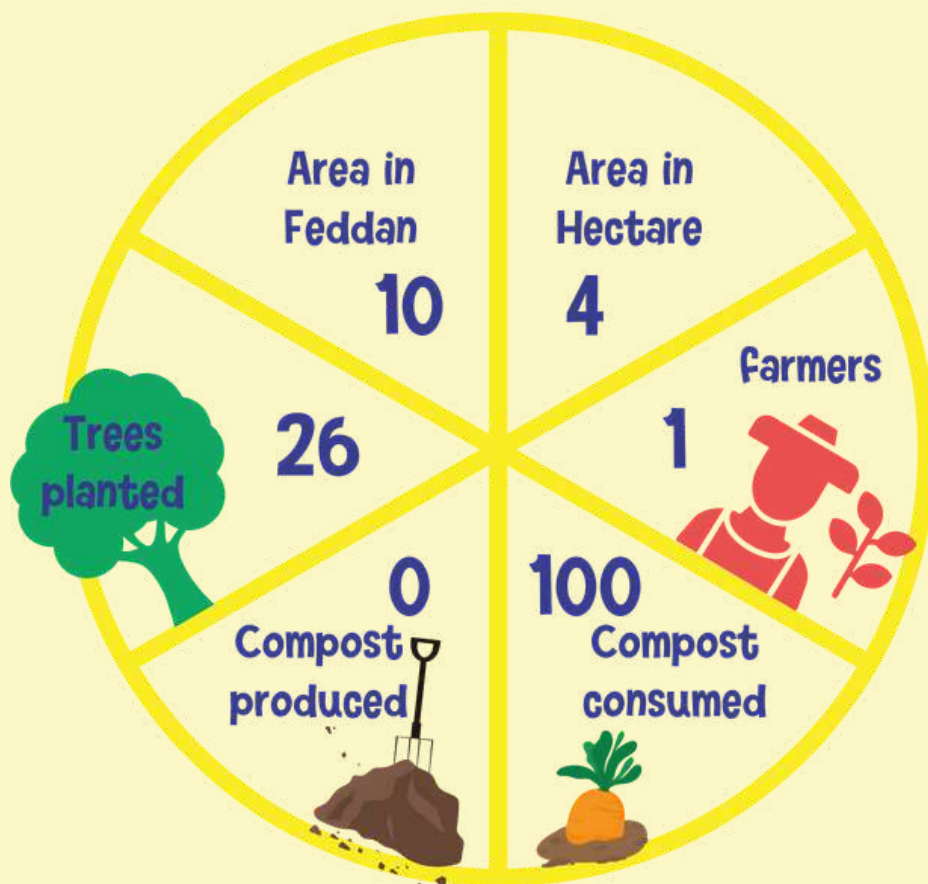
Orabi is located in El Behira governorate, a dazzling destination that captures the essence of Egypt's timeless charm. Its fertile land stretches from the Mediterranean Sea to the Nile Delta, providing a rich agricultural bounty that has sustained communities for centuries. Orabi Farm is nestled in the heart of the country's lush agricultural region and is located on the northern coast of Egypt. Orabi is growing 20 trees.



19. Al Bokly Farm



Al Bokly is located in El Behira governorate, a dazzling destination that captures the essence of Egypt's timeless charm. Its fertile land stretches from the Mediterranean Sea to the Nile Delta, providing a rich agricultural bounty that has sustained communities for centuries. Al Bokly Farm is nestled in the heart of the country's lush agricultural region and is located on the northern coast of Egypt. Al Bokly is growing 26 trees and produces around 0 tons of compost.

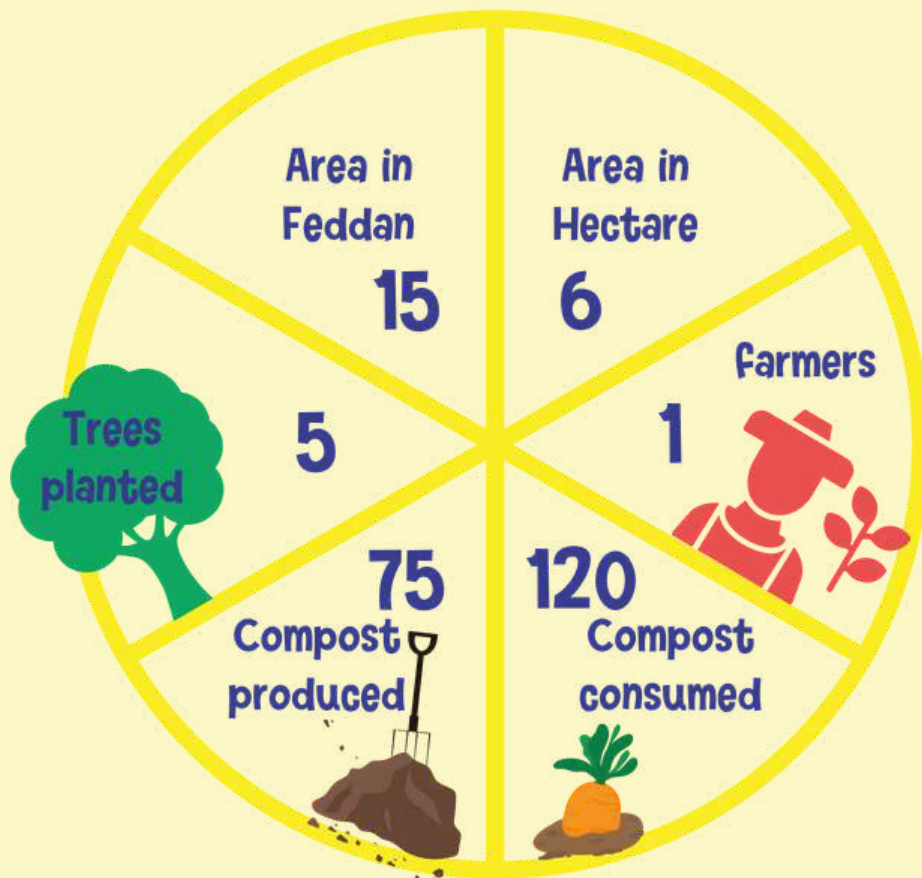




20. Hussein Abu Saada Farm



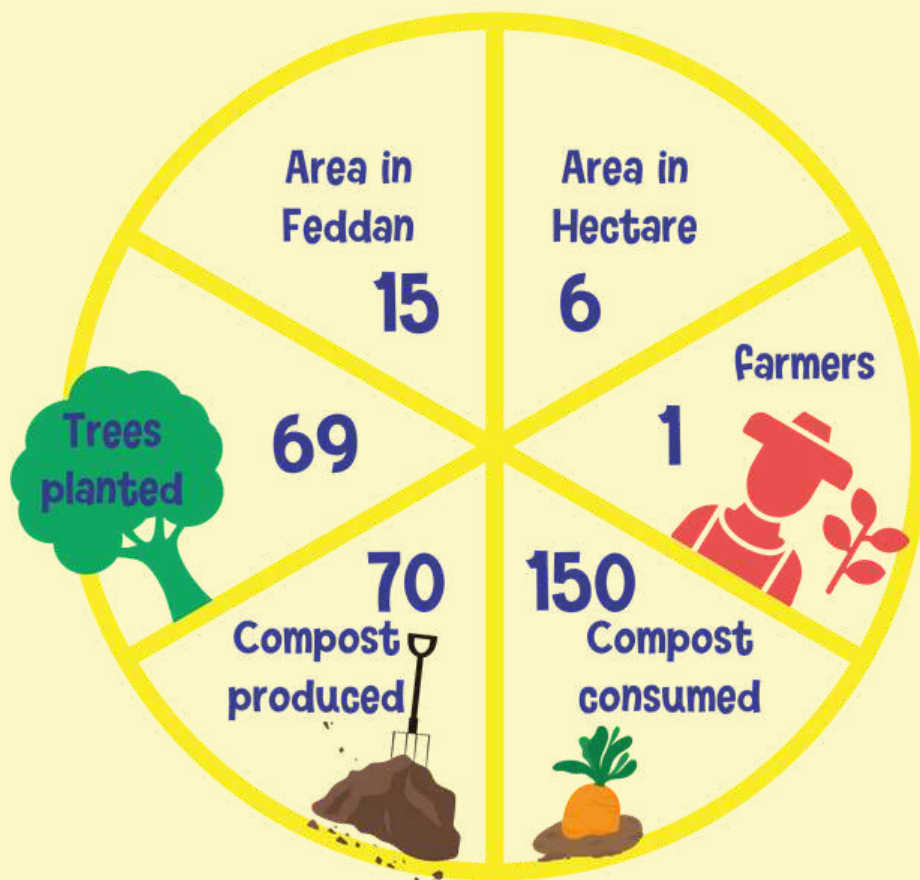
Hussein Abu Saada is located in El Behira governorate, a dazzling destination that captures the essence of Egypt's timeless charm. Its fertile land stretches from the Mediterranean Sea to the Nile Delta, providing a rich agricultural bounty that has sustained communities for centuries. Hussein Abu Saada Farm is nestled in the heart of the country's lush agricultural region and is located on the northern coast of Egypt. Hussein Abu Saada is growing 5 trees and produces around 75 tons of compost.



21. Samy El Maghazi Farm



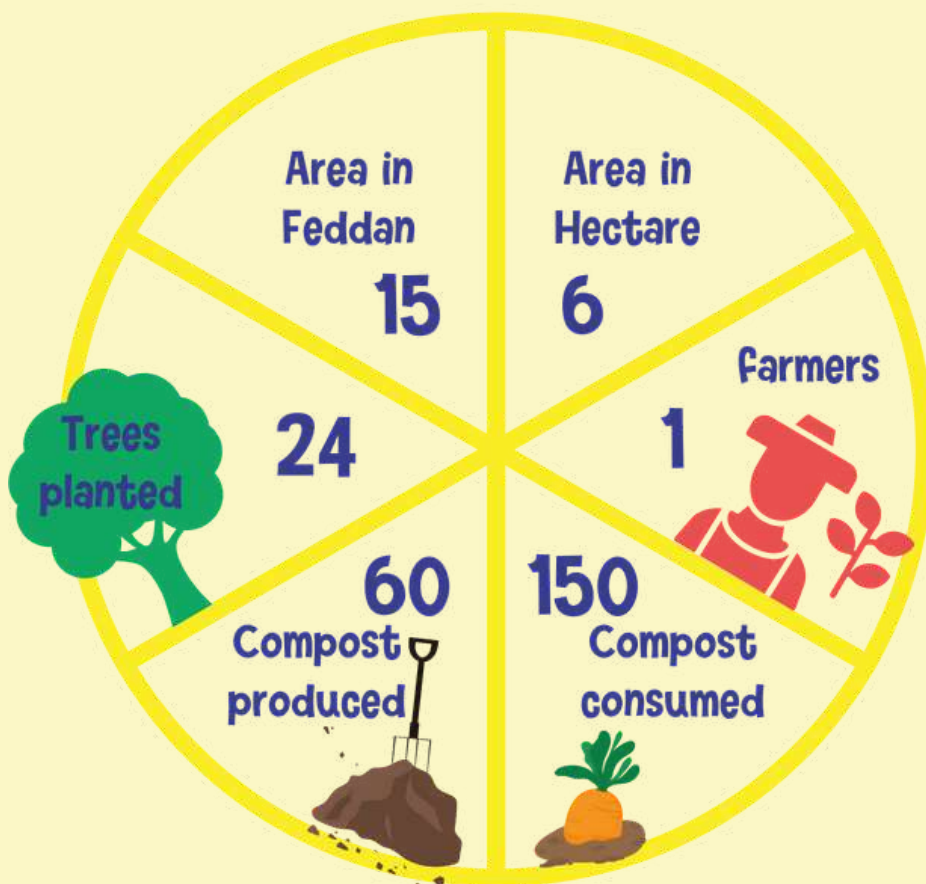
Samy El Maghazi is located in El Behira governorate, a dazzling destination that captures the essence of Egypt's timeless charm. Its fertile land stretches from the Mediterranean Sea to the Nile Delta, providing a rich agricultural bounty that has sustained communities for centuries. Samy El Maghazi Farm is nestled in the heart of the country's lush agricultural region and is located on the northern coast of Egypt. Samy El Maghazi is growing 69 trees and produces around 70 tons of compost.



22. Sabry Kamal Farm



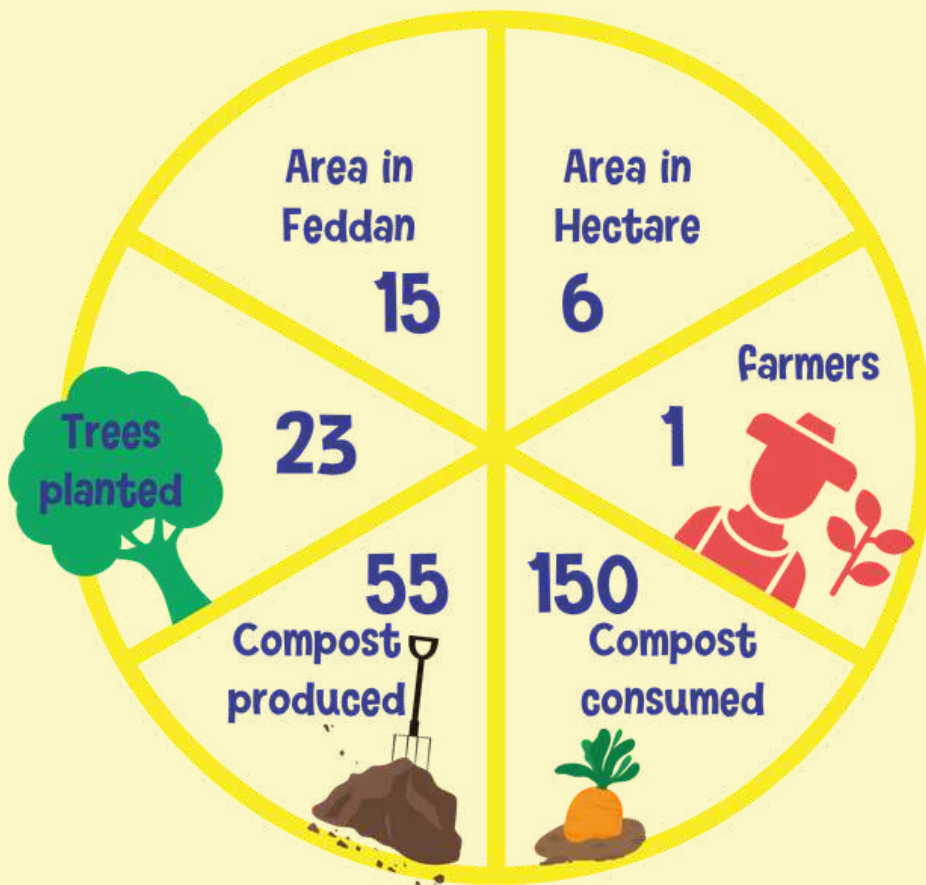
Sabry Kamal is located in El Behira governorate, a dazzling destination that captures the essence of Egypt's timeless charm. Its fertile land stretches from the Mediterranean Sea to the Nile Delta, providing a rich agricultural bounty that has sustained communities for centuries. Sabry Kamal Farm is nestled in the heart of the country's lush agricultural region and is located on the northern coast of Egypt. Sabry Kamal is growing 24 trees and produces around 60 tons of compost.



23. Kamal Hamed Farm



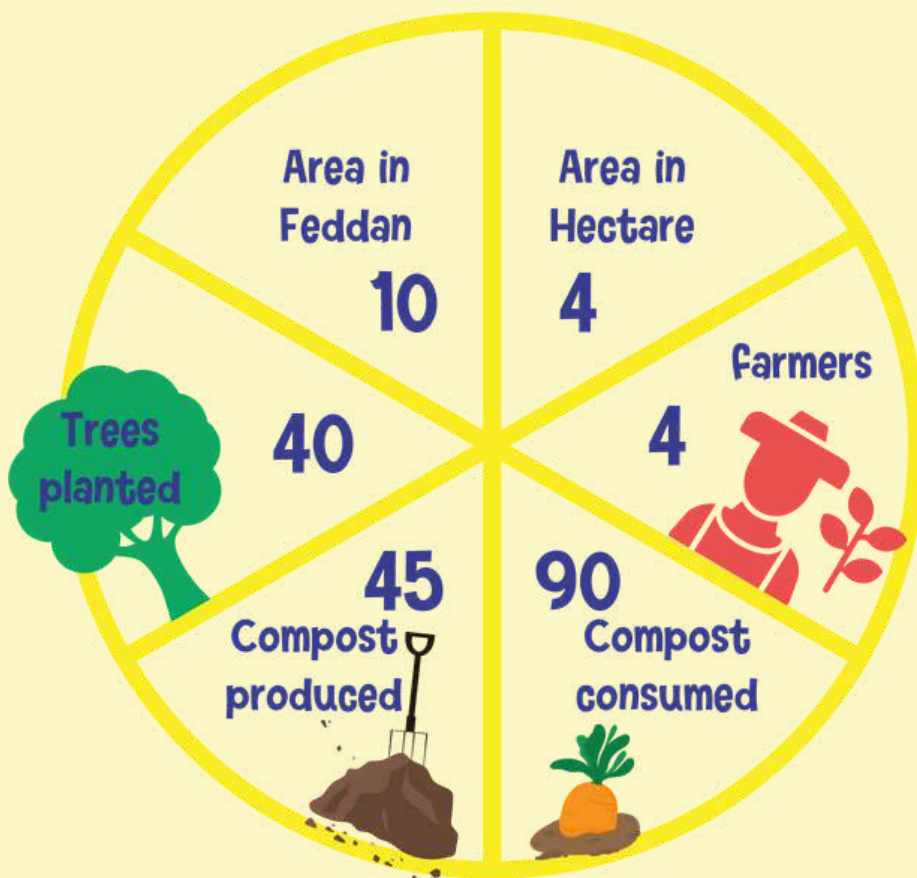
Kamal Hamed is located in El Behira governorate, a dazzling destination that captures the essence of Egypt's timeless charm. Its fertile land stretches from the Mediterranean Sea to the Nile Delta, providing a rich agricultural bounty that has sustained communities for centuries. Kamal Hamed Farm is nestled in the heart of the country's lush agricultural region and is located on the northern coast of Egypt. Kamal Hamed is growing 23 trees and produces around 55 tons of compost.



24. Reda Mohamed farm



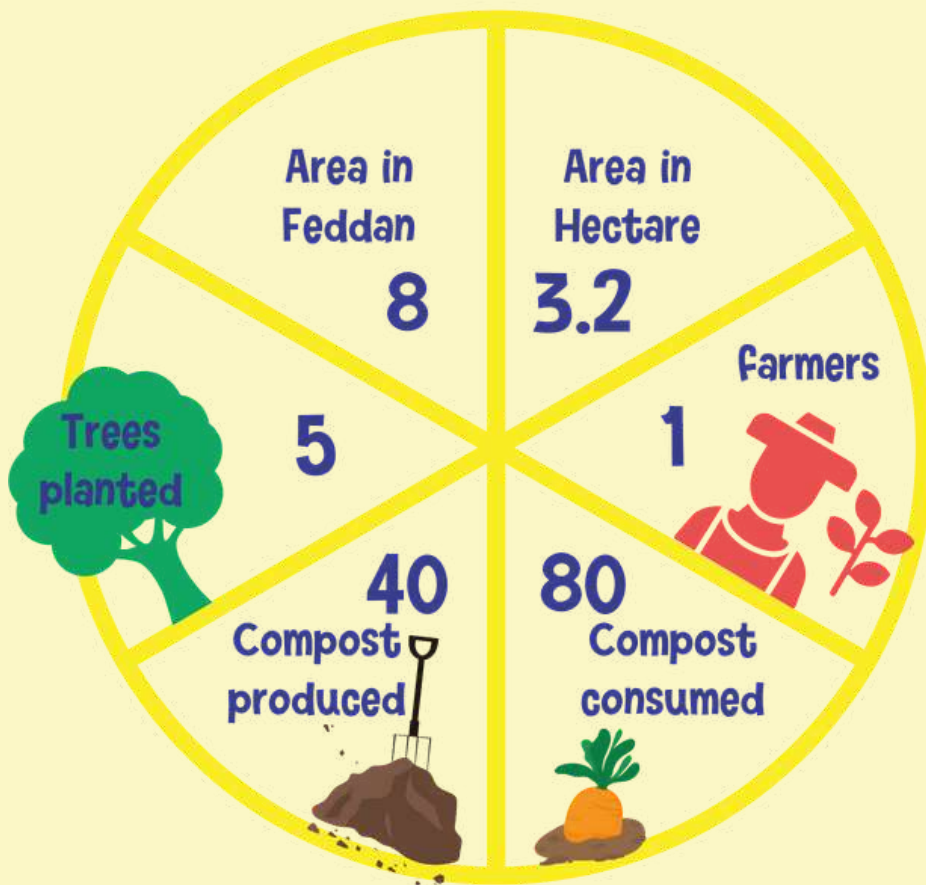
Reda Mohamed is located in El Behira governorate, a dazzling destination that captures the essence of Egypt's timeless charm. Its fertile land stretches from the Mediterranean Sea to the Nile Delta, providing a rich agricultural bounty that has sustained communities for centuries. Reda Mohamed farm is nestled in the heart of the country's lush agricultural region and is located on the northern coast of Egypt. Reda Mohamed is growing 40 trees and produces around 45 tons of compost.



25. Yasser Salah Farm



Yasser Salah is located in El Behira governorate, a dazzling destination that captures the essence of Egypt's timeless charm. Its fertile land stretches from the Mediterranean Sea to the Nile Delta, providing a rich agricultural bounty that has sustained communities for centuries. Yasser Salah Farm is nestled in the heart of the country's lush agricultural region and is located on the northern coast of Egypt. Yasser Salah is growing 5 trees and produces around 40 tons of compost.

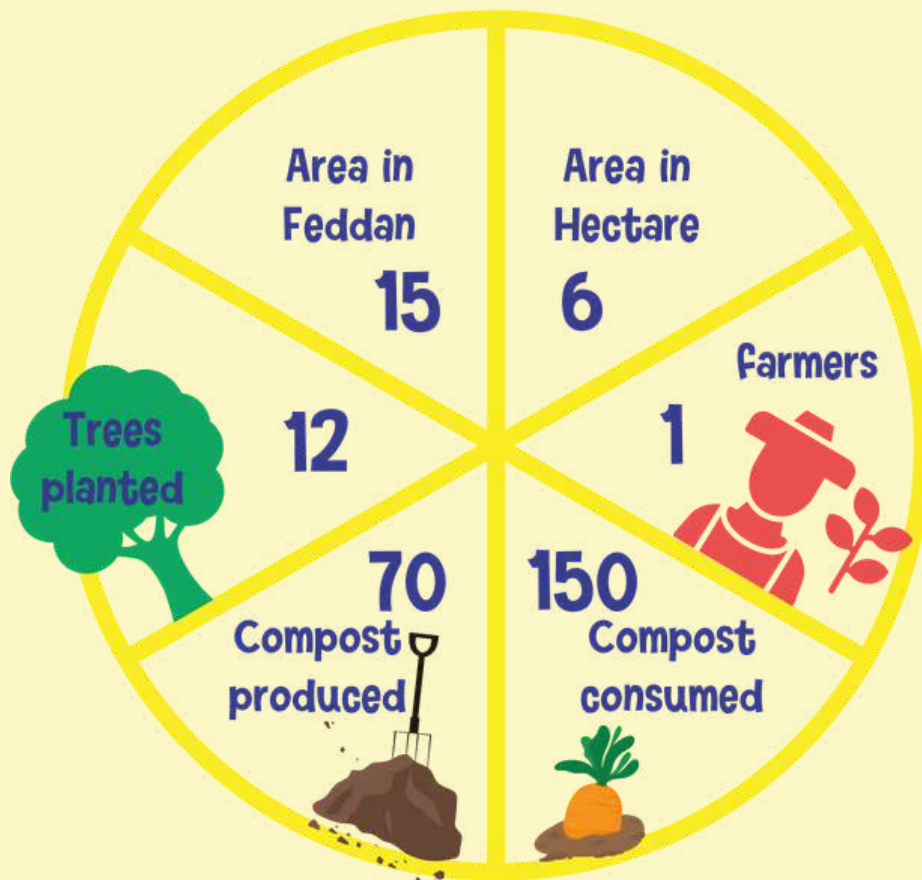




26. Hamed El Maghazi Farm



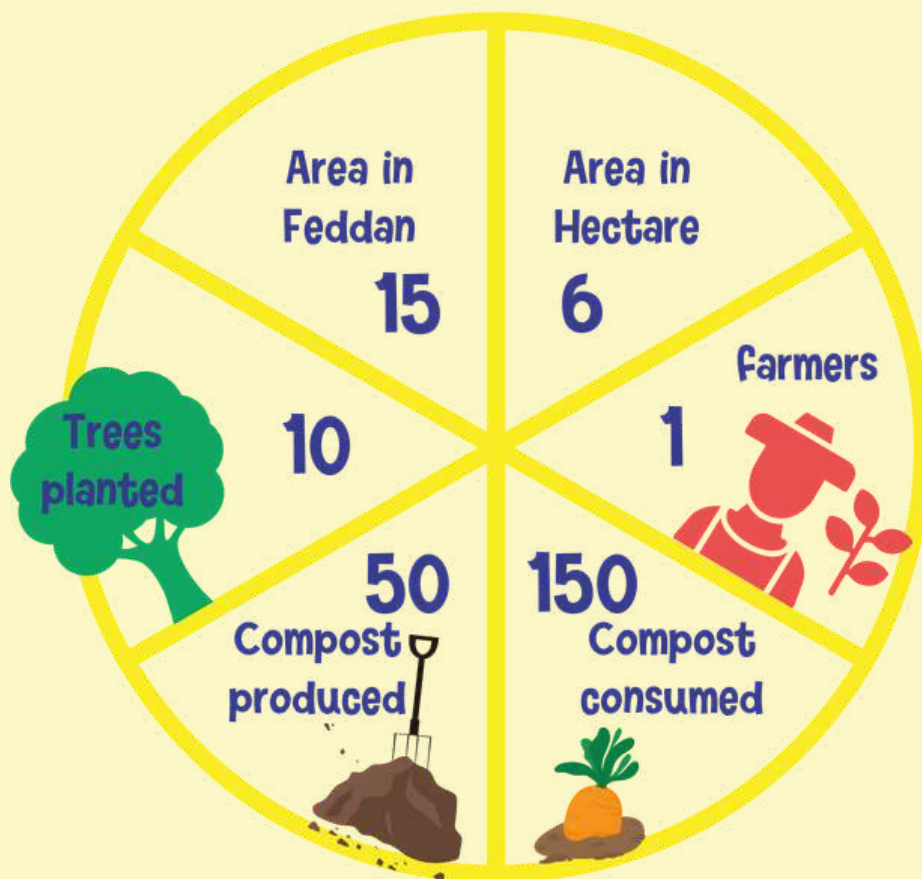
Hamed El Maghazi is located in El Behira governorate, a dazzling destination that captures the essence of Egypt's timeless charm. Its fertile land stretches from the Mediterranean Sea to the Nile Delta, providing a rich agricultural bounty that has sustained communities for centuries. Hamed El Maghazi farm is nestled in the heart of the country's lush agricultural region and is located on the northern coast of Egypt. Hamed El Maghazi is growing 12 trees and produces around 70 tons of compost.



27. Saad Abdel Aziz Farm



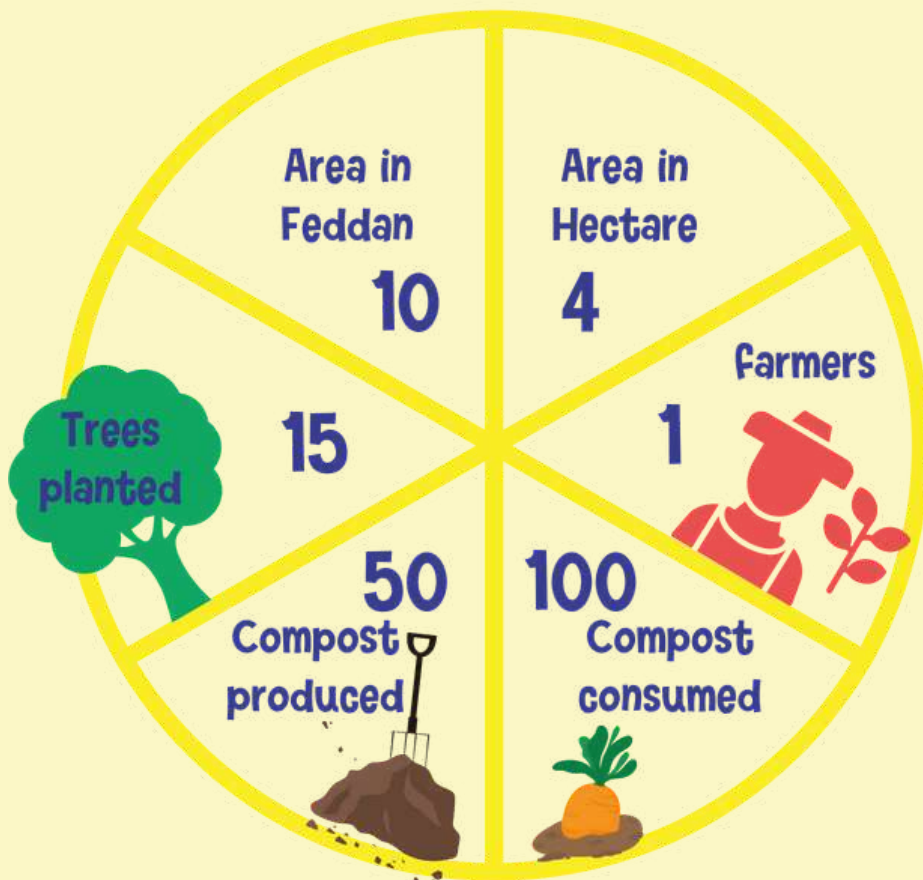
Saad Abd El Aziz is located in El Behira governorate, a dazzling destination that captures the essence of Egypt's timeless charm. Its fertile land stretches from the Mediterranean Sea to the Nile Delta, providing a rich agricultural bounty that has sustained communities for centuries. Saad Abd El Aziz Farm is nestled in the heart of the country's lush agricultural region and is located on the northern coast of Egypt. Saad Abd El Aziz is growing 10 trees and produces around 50 tons of compost.



28. Ahmed Ramadan Farm



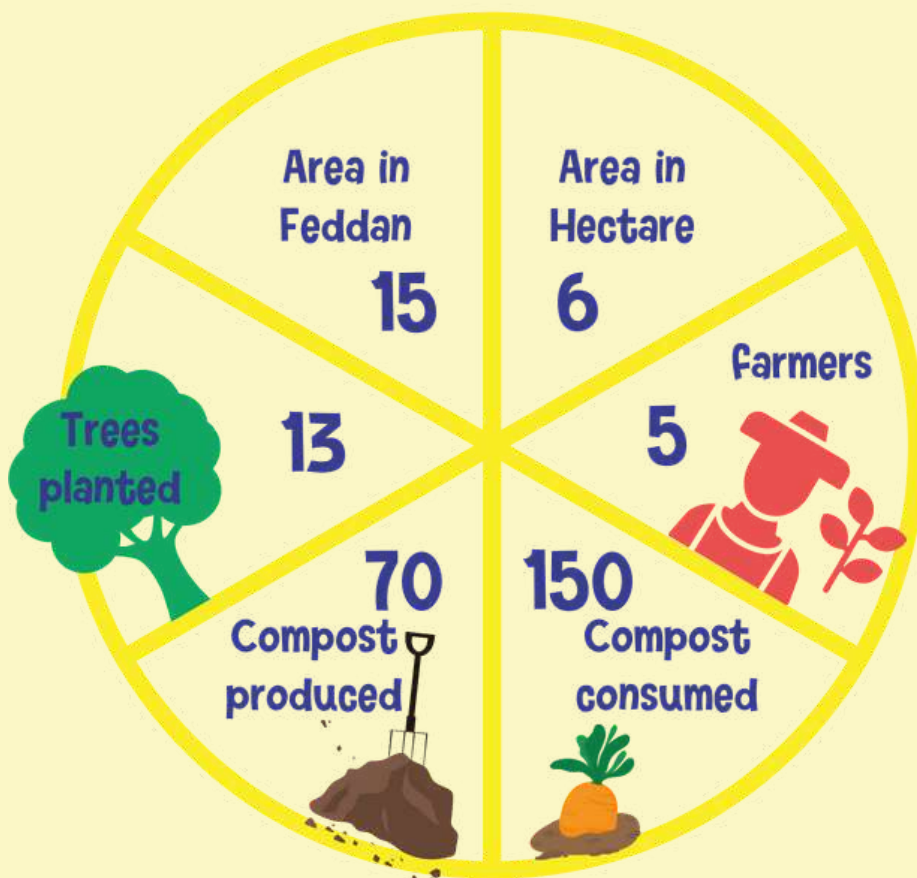
Ahmed Ramadan is located in El Behira governorate, a dazzling destination that captures the essence of Egypt's timeless charm. Its fertile land stretches from the Mediterranean Sea to the Nile Delta, providing a rich agricultural bounty that has sustained communities for centuries. Ahmed Ramadan Farm is nestled in the heart of the country's lush agricultural region and is located on the northern coast of Egypt. Ahmed Ramadan is growing 15 trees and produces around 50 tons of compost.



29. Youssuf Badr Farm



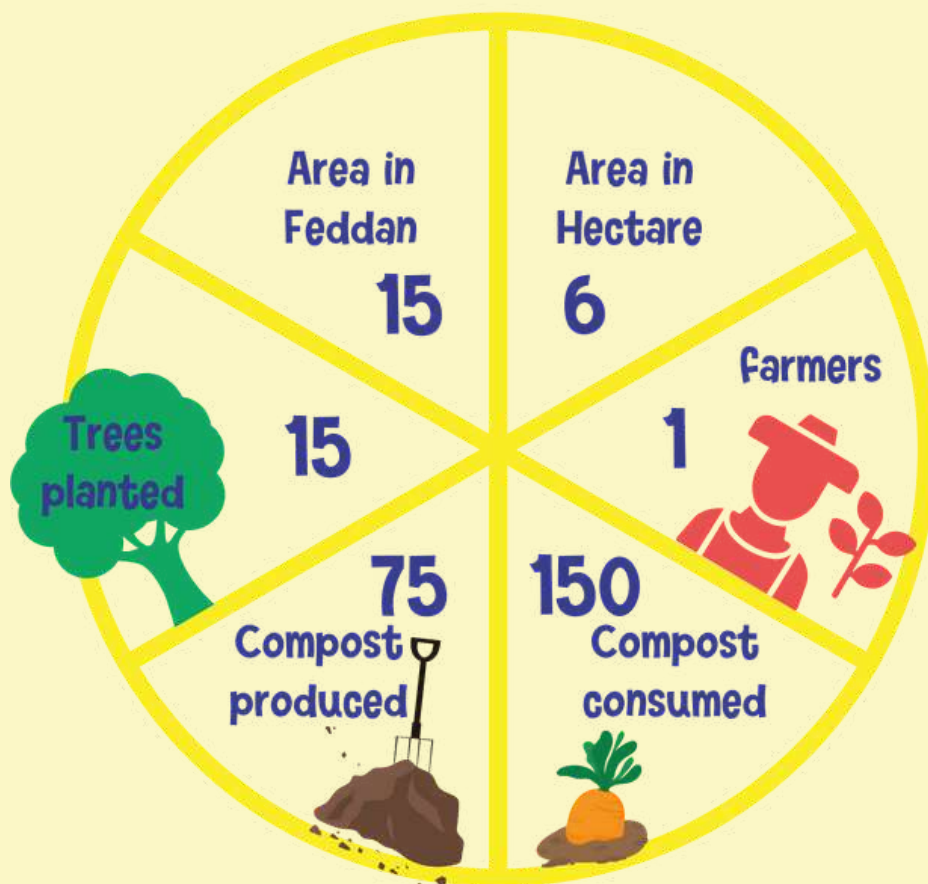
Youssuf Badr is located in El Behira governorate, a dazzling destination that captures the essence of Egypt's timeless charm. Its fertile land stretches from the Mediterranean Sea to the Nile Delta, providing a rich agricultural bounty that has sustained communities for centuries. Youssuf Badr Farm is nestled in the heart of the country's lush agricultural region and is located on the northern coast of Egypt. Youssuf Badr is growing 13 trees and produces around 70 tons of compost.



30. Ghazal Farm



Ghazal is located in El Behira governorate, a dazzling destination that captures the essence of Egypt's timeless charm. Its fertile land stretches from the Mediterranean Sea to the Nile Delta, providing a rich agricultural bounty that has sustained communities for centuries. Ghazal Farm is nestled in the heart of the country's lush agricultural region and is located on the northern coast of Egypt. Ghazal is growing 15 trees and produces around 75 tons of compost.





THANK YOU



+20 0100 6201983

TEAM@RDNASTORE.COM

BUILDING 13, STREET 254, MAADI, CAIRO

WWW.RDNASTORE.COM